

# Information meeting ERASMUS+ placements 2023/2024 (during and after studies) studies, traineeships 2024/2025

16.11.2023



## STUDENTS – TYPES OF MOBILITIES:

long-term mobility **studies/traineeships** from 2 to 12 months: physical mobility (minimum 2 months) and **optional** virtual part (min./max. period not defined)

short-term mobility **studies/traineeships** (5-30 days of physical mobility) combined with **obligatory** (in case of PhD students - optional) virtual part (min./max. period not defined)

**BIP** (Blended Intensive Programmes): short-term mobility **studies** (5-30 days of physical mobility) combined with **obligatory** virtual part (min./max. period not defined) - minimum 3 ECTS

### SIMILAR RULES, DIFFERENT SCHEDULE

Rules of recruitment according to Regulations no 17/XV R/2019 from 27.02.2019 with changes:

<https://www.umw.edu.pl/pl/erasmus/erasmus-informacje-ogolne>

[https://www.umw.edu.pl/sites/default/files/2022-10/Zasady\\_Kwalifikacji\\_STUDIA\\_EN%282%29.pdf](https://www.umw.edu.pl/sites/default/files/2022-10/Zasady_Kwalifikacji_STUDIA_EN%282%29.pdf)

[https://www.umw.edu.pl/sites/default/files/2022-10/Zasady\\_Kwalifikacji\\_praktyki\\_EN%282%29.pdf](https://www.umw.edu.pl/sites/default/files/2022-10/Zasady_Kwalifikacji_praktyki_EN%282%29.pdf)

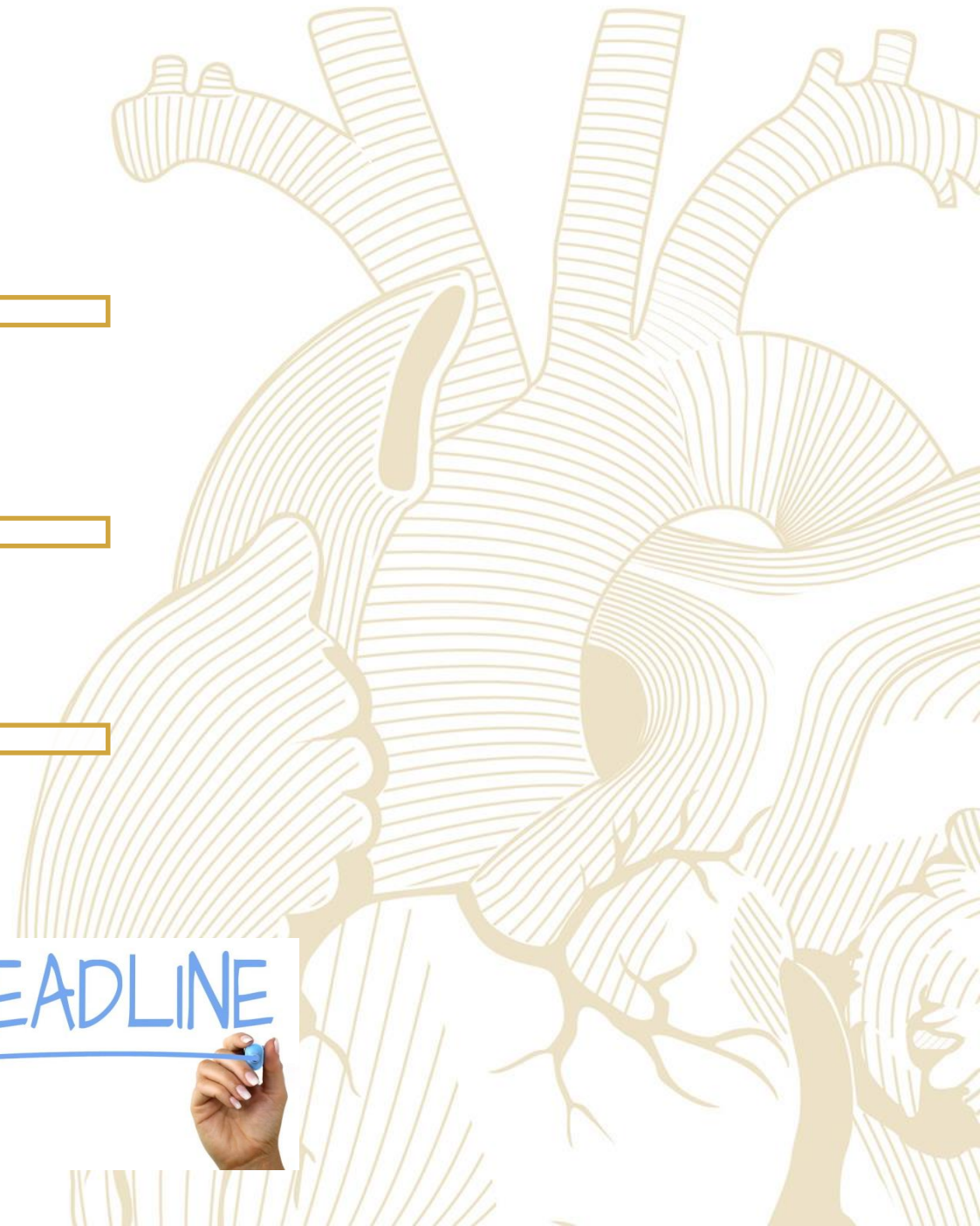
### Deadlines:

- **Studies** - until 15 March
- **Traineeships during studies and after studies** – until 30 November
- **BIP** – continuous recruitment



UNIwersytet Medyczny  
IM. PIASTÓW ŚLĄSKICH WE WROCLAWIU

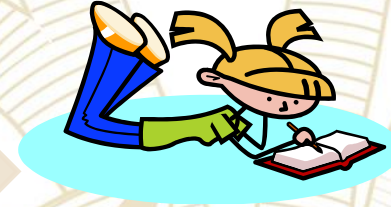
DEADLINE



## WHERE YOU CAN GO:

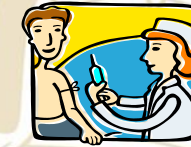
studies

- place – university which has the agreement with UMW for certain field of studies



traineeships

- place – institution which has the agreement with UMW
- place found by the student (**suggested**)



<https://www.umw.edu.pl/pl/erasmus/uczelnie-partnerskie>

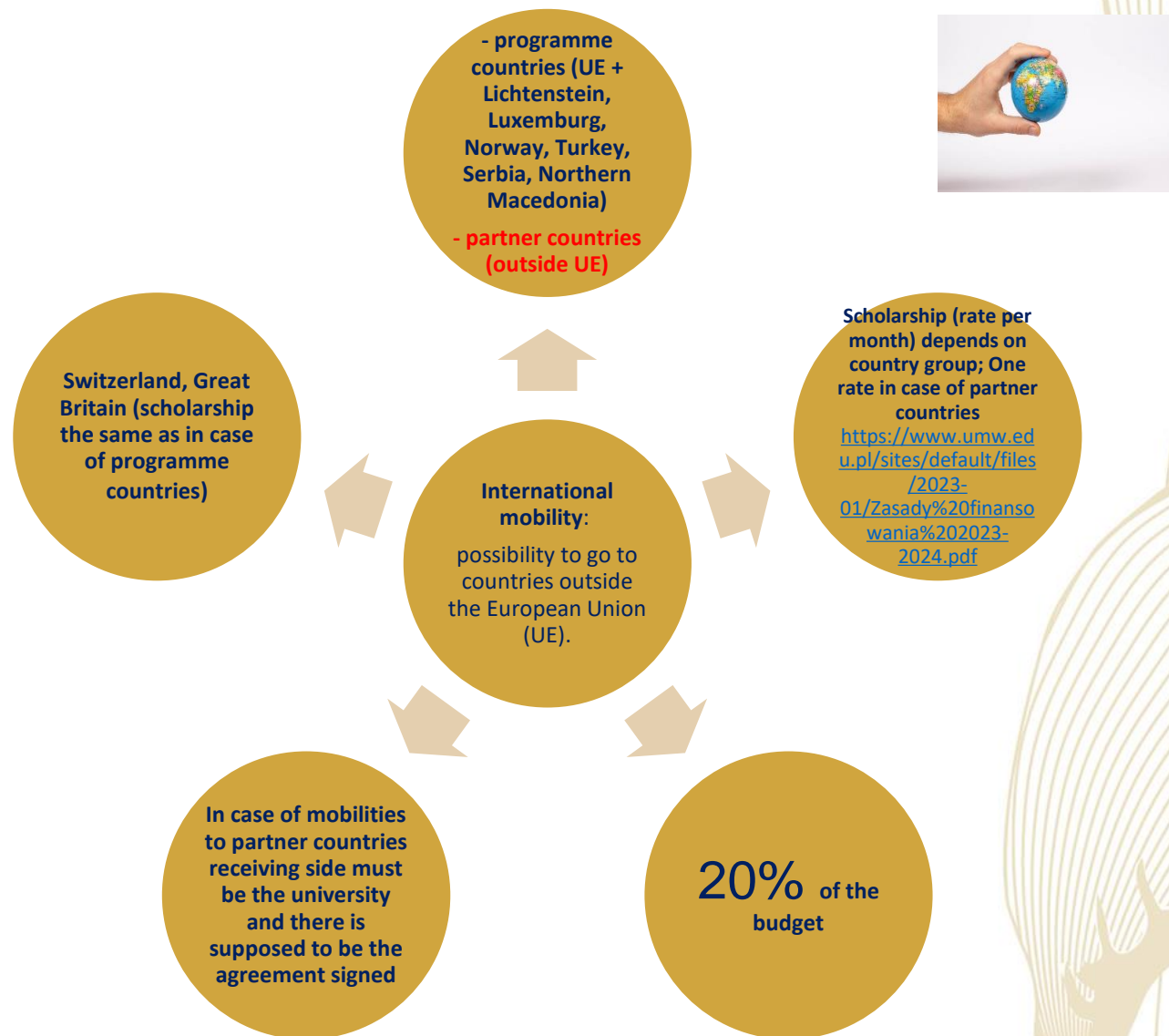
<https://www.umw.edu.pl/sites/default/files/2023-11/Praktyki%202023.xls>

**ATTENTION!** When choosing a place pay attention to the faculty.

**ATTENTION!** Student can not ask about an extra place in the institution which has the agreement with UMW. It is not a place found by the student.

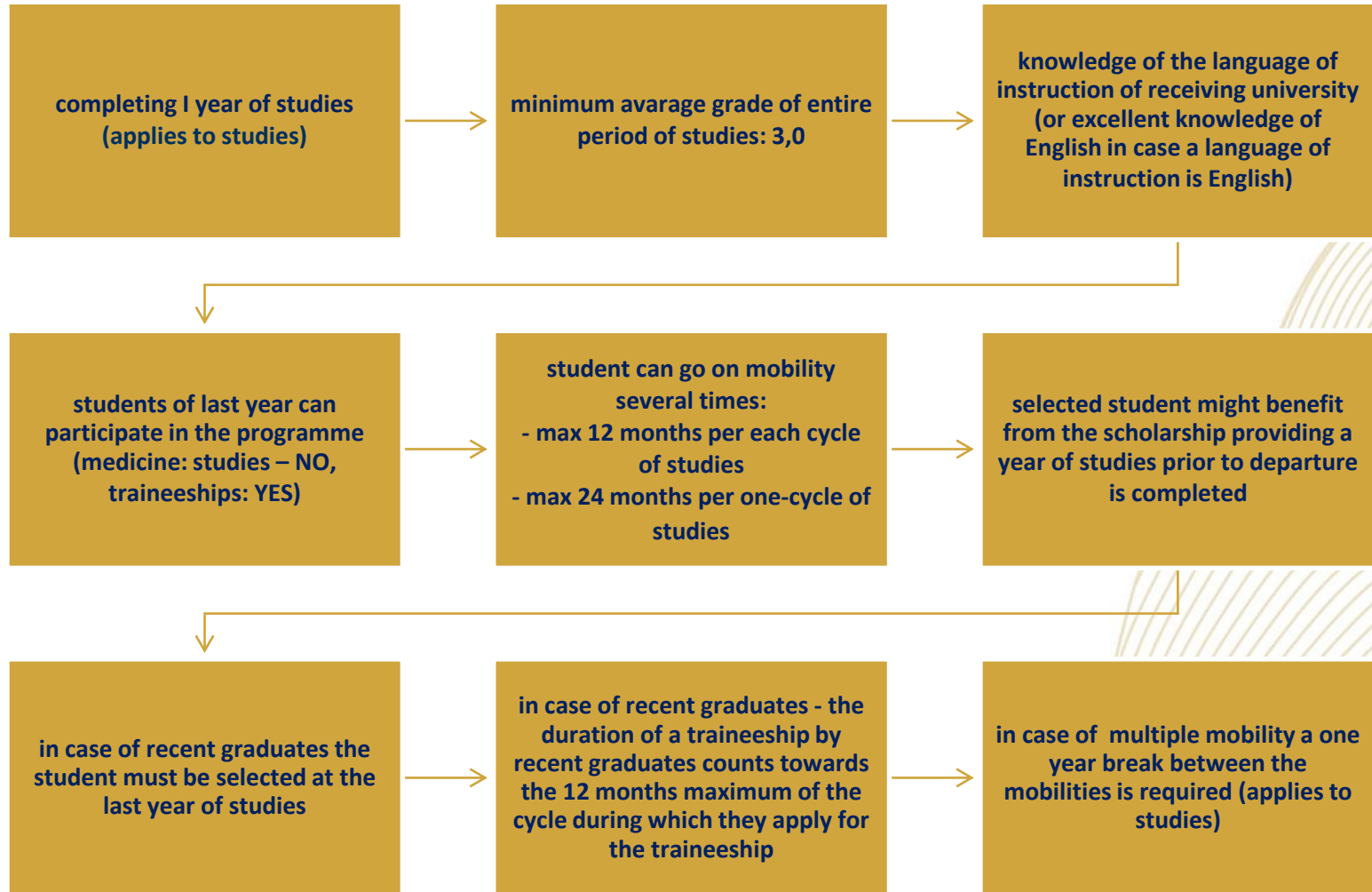


# NOVELTIES IN THE ERASMUS+ PROGRAMME 2021-2027– INTERNATIONAL MOBILITIES





## CONDITIONS:



APPLICATIONS ON-LINE AVAILABLE AT FOLLOWING WEBSITES:

<https://www.umw.edu.pl/pl/erasmus/wyjazdy-na-praktyki>

<https://www.umw.edu.pl/pl/erasmus/wyjazdy-na-studia>

<https://erasmus-outgoing.umw.edu.pl/>

CREATE ACCOUNT

▪ STUDIES

until 15 March

▪ TRAINEESHIPS during studies and after studies

until 30 November

STEP 1

• Personal data

• Choosing places

STEP 2 ATTACH DOCUMENTS

✓ starting from academic year 2020/2021 students do not have to attach certificates of average grade of entire period of studies prior to departure (information is provided by dean's office)

✓ letter of intent in case of traineeships (place found by the student; **might be sent later**)

✓ certificates and documents regarding extra criterias of selection

✓ certificate of disability and/or maintenance scholarship if applies

STEP 2 SIGN UP FOR THE LANGUAGE EXAM

✓ in case of mobilities to Germany, Austria – German, to France – French, to other countries – English

✓ students who go to the country where the language of instruction is their mother tongue do not have to pass a language exam and get 5

✓ grade of the language exam might be the same as the one obtained during a previous recruitment providing there was not more than 9 months break

✓ in exceptional cases (traineeships) is possible to go to Germany, Austria or France and pass an English exam providing host side accepts this (written acceptance)

Confirm and submit



**THE BASE OF RECRUITMENT OF THE STUDENT IS THE NUMBER OF POINTS AWARDED FOR :**



**average grade of entire period of studies prior to departure**

+

**language exam (carried out by the Department of Languages)**

+

**certified documents of criterias of recruitment**

**On the basis of submitted documents the International Relations Office (Erasmus Office) prepares the list of applicants willing to go abroad according to the awarded points**

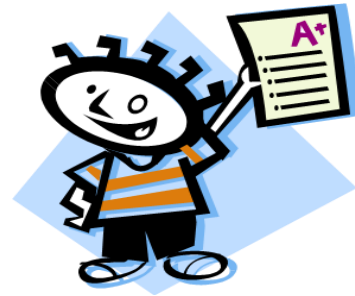
**In case of the same number of points awarded the order is made by average grade of entire period of studies prior to departure**



## THE FOLLOWING RULES APPLY TO CALCULATION OF POINTS:

- ❑ average grade of entire period of studies

students	
average grade	awarded points
3.00 – 3.50	6
3.51 – 3.75	7
3.76 – 4.00	8
4.01 – 4.25	9
4.26 – 4.50	10
4.51 – 4.75	11
4.76 – 5.00	12



- ❑ points awarded in language exam

Exam – ocena	Awarded points
bardzo dobry (5)	4
ponad dobry (4,5)	3
dobry (4)	2
dość dobry (3,5)	1

**Attention: grade of language of instruction (French, German) in case of mobilities of studies can not be lower than 3,5**



## EXTRA CRITERIAS OF SELECTION

active participation in the Students' Science Associations – minimum 1 year (no matter how many associations a student is a member of) – 1 point

research works presented in conferences of the Students' Science Associations or published in handouts of that conferences (no matter how many research works were presented or published) – 1 point

research works presented or published in conferences or published in scientific journals (no matter how many research works were presented or published) – 1 point

awards given to a student during the studies – Ministry, Rector's (except for Rector's scholarship) or University awards (no matter how many) – 1 point

foreign internships, foreign vocational courses or workshops (no matter how many) – 1 point

work for student's life (confirmed by the organisation and university authorities) – 1 point

work for the Erasmus+ programme at the home university - 1 point



## TIMETABLE OF RECRUITMENT OF STUDENTS:

### STUDIES

1. submitting application on-line and additional documents - until 15 March,
2. language examination - until 30 March,
3. interview with a relevant board of recruitment – until 15 April,
4. announcement of the result of the recruitment – until 20 April,
5. organisational meeting with the accepted students – until 25 April,
6. submitting documents to be sent to partner universities – until 10 May

### TRAINEESHIP during studies and after studies

1. submitting application on-line and additional documents - until 30 November
2. language examination – until 15 December
3. interview with a relevant board of recruitment – until 15 January
4. announcement of the result of the recruitment – until 20 January
5. organisational meeting with the accepted students – until 25 January
6. submitting documents to be sent to partner universities – until 10 February





extra funds for students with disability and those who receive maintenance scholarship

- free courses on-line (OLS platform – Online Language Support)
- refund of costs of language course (excluding English, French, and German) which takes place before the studies at partner universities start. The amount is agreed each year

„green travel”: travel costs of 50 EUR by using means of low-emission transport and extra financial support up to 4 days for a return journey  
<https://www.umw.edu.pl/erasmus-program>

Erasmus+ scholarship

travel costs:  
- in case of short-time mobilities of students of lower chances  
- mobilities to partner countries (if the university agrees)

grant (either scientific or social) awarded by the student at the home university



Financial conditions during a student's stay abroad cover:

Amounts of scholarship  
- traineeships 2023/2024 – information at the website  
- studies 2024/2025 – no information yet

## FACULTY OF MEDICINE

- **Tymoteusz Okupnik MSc - outgoing students**

Zakład Fizjologii  
ul. Chałubińskiego 10  
50-368 Wrocław  
tel. +48 71 784 14 28  
e-mail: [tymoteusz.okupnik@umw.edu.pl](mailto:tymoteusz.okupnik@umw.edu.pl)

- **Dr. Zygmunt Domagała - incoming students**

Zakład Anatomii Prawidłowej  
ul. Chałubińskiego 6a  
50-368 Wrocław  
tel. +48 71 784 13 31  
e-mail: [zygmunt.domagala@umw.edu.pl](mailto:zygmunt.domagala@umw.edu.pl)

## Faculty of Dentistry dr Irena Duś-Ilnicka

Zakład Periodontologii  
ul. Krakowska 26  
50-425 Wrocław  
telefon: +48 71 784 03 81  
e-mail: [irena.dus-ilnicka@umw.edu.pl](mailto:irena.dus-ilnicka@umw.edu.pl)



## CONTACT:

➤ Institutional Coordinator

Outgoing students

Sława Ksenycz [slawa.ksenycz@umw.edu.pl](mailto:slawa.ksenycz@umw.edu.pl)

➤ Incoming students

Dominika Lucińska [dominika.lucinska@umw.edu.pl](mailto:dominika.lucinska@umw.edu.pl)

Uniwersytet Medyczny im. Piastów Śląskich we Wrocławiu

International Relations Office

ul. T. Chałubińskiego 6a

50-368 Wrocław

tel: +48 71 784 16 85

<https://www.umw.edu.pl/pl/erasmus/wykaz-koordynatorow>

